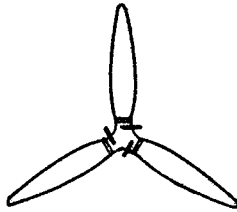
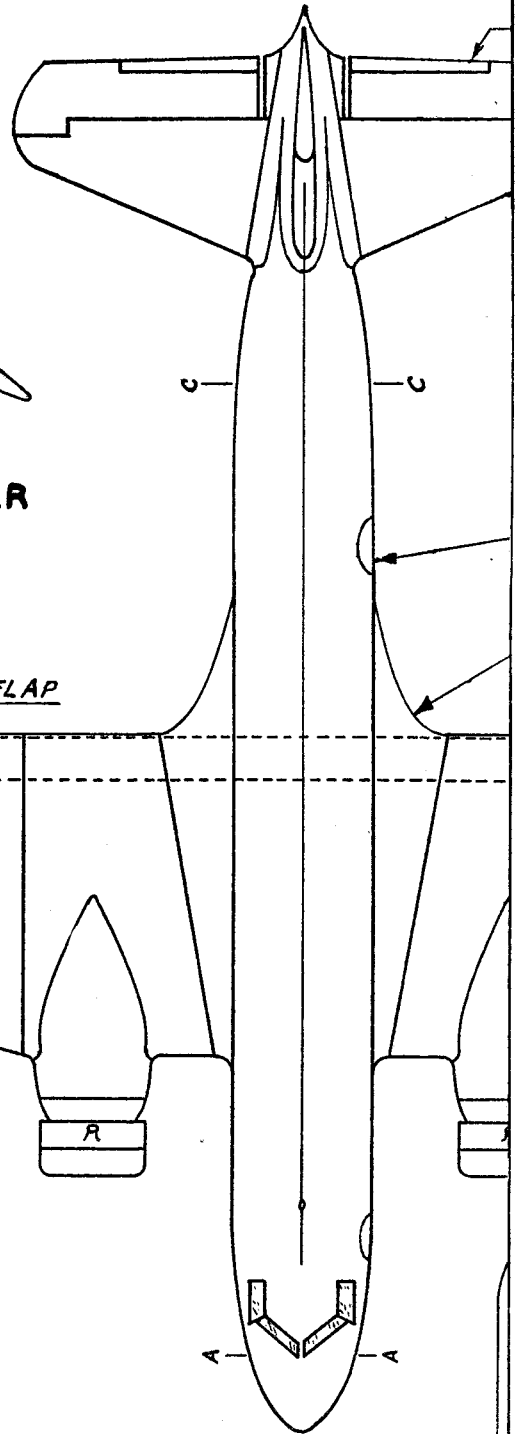




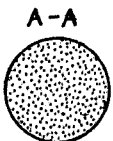
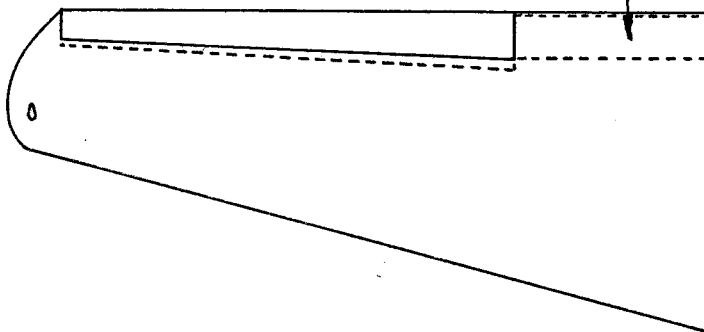
REAR LANDING GEAR STRUT (TRUE LENGTH)



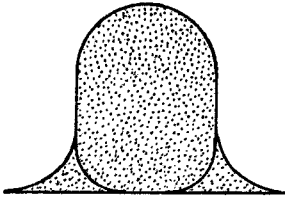
PROPELLER



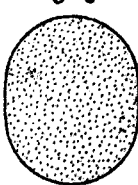
LANDING FLAP



B-B



C-C

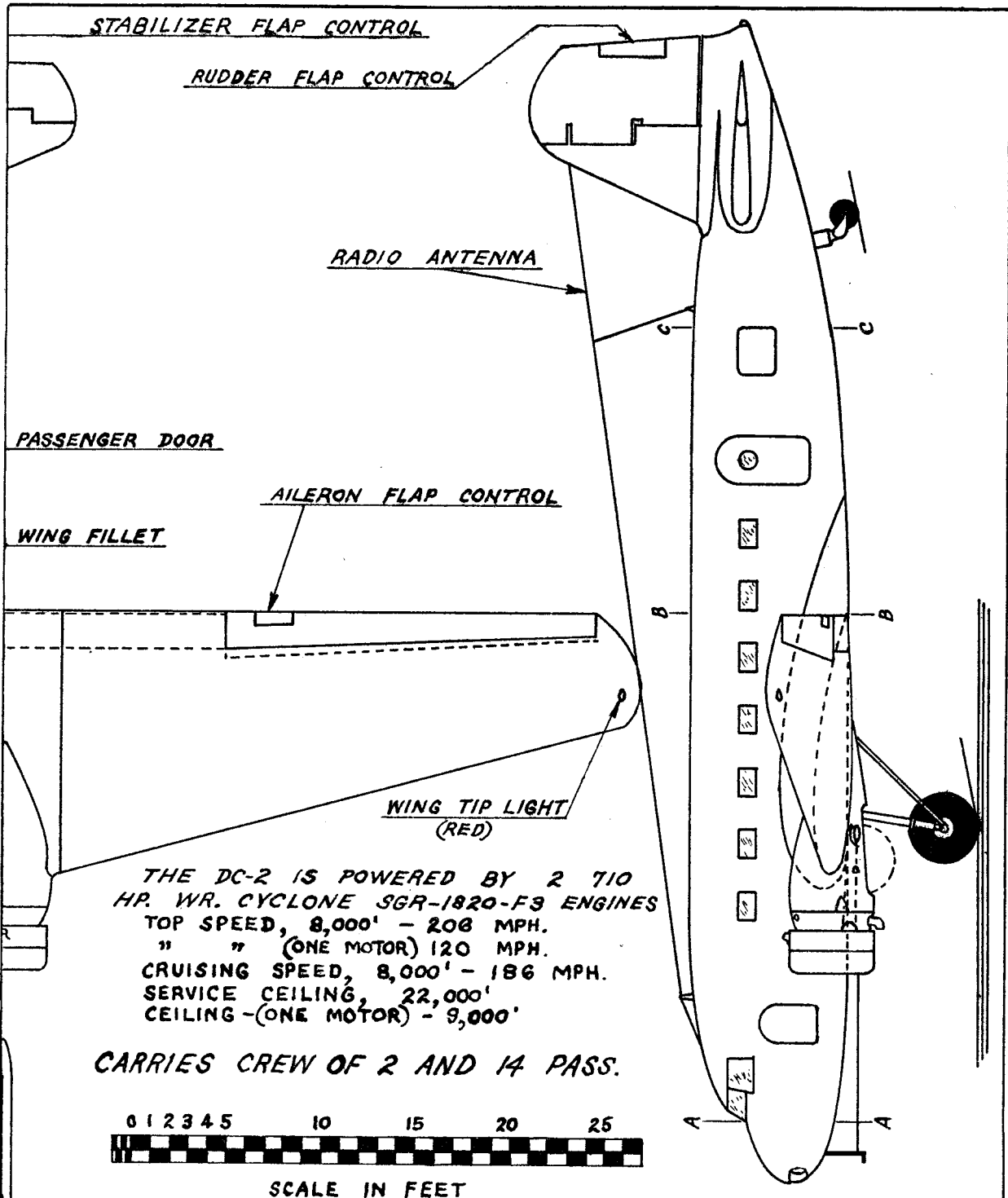


FUSELAGE CROSS SECTIONS



REAR LANDING NOT SHOWN SEE D

DOUGLAS

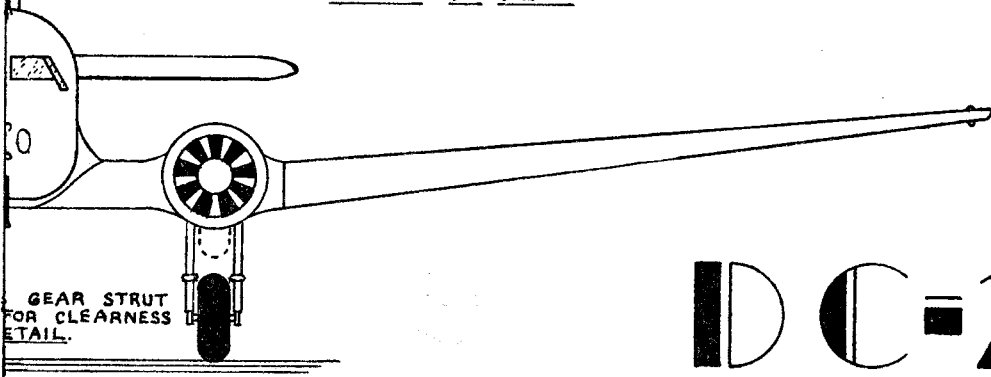


THE DC-2 IS POWERED BY 2 710 HP. WR. CYCLONE SGR-1820-F3 ENGINES
 TOP SPEED, 8,000' - 208 MPH.
 " " (ONE MOTOR) 120 MPH.
 CRUISING SPEED, 8,000' - 186 MPH.
 SERVICE CEILING, 22,000'
 CEILING -(ONE MOTOR) - 9,000'

CARRIES CREW OF 2 AND 14 PASS.



SCALE IN FEET



DC-2