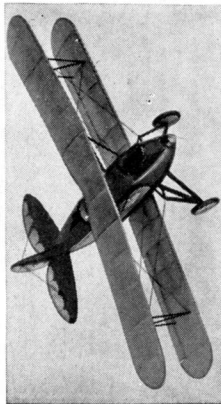


C-D 'REPS' — FOR THOSE WHO Something Radically Different in Cleveland-Designed Models

This new C-D Flying Line has been designed after hearing the constant appeals of model builders for nearly two years that we design lighter, better flying models. We thought we would leave this field to other manufacturers (and they find it hard to find models available in the price range of \$1.50 or less) and we decided to enter it. Quality and completeness of kits to build up models like the photographs is for them — yes, 100%. Already modelbuilders acclaim them "the" prize winners in flying contests. Now you can build real looking scale models for even while we call them "representative", we have made the necessary adjustments for better flying qualities so that experts or even the designers of the real ships themselves would not find any apparent difference. We started out with the idea of discontinuing numbers after we have sold out the initial stock but the demand after discontinuing two was so great for one of the numbers, we thought we would bring this back again and the continuance of this line depends upon modelbuilders themselves.

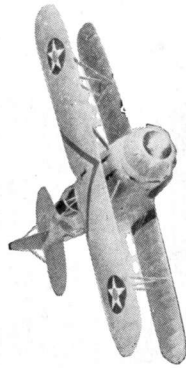
ALL "REP" KITS INCLUDE

A full size, detailed mechanical drawing, bulkheads, etc., drawn out for repairs (not just a few lines sketching a flimsy model). All wood printed out (a great many prices). Finished scale wood wheels (not "toy" wheels). Fine turned cowl front or drilled nose supplied (not just a turned block or undrilled). Real model airplane rubber (not rubber bands). Real celluloid for windshields (not just a piece of cellophane). All strip wood of the finest quality accurately cut to size (not soft spongy balsa that is only sliced on a razor stripper). White Japanese covering tissue (not the usual "weak" colored tissues that prove other kits "flying toys" when supplied). Insignia and wing lettering supplied printed out. Wire, washers, etc., etc. Absolutely everything (even scale prop blocks, always omitted by others) needed EXCEPT THE LIQUIDS.



GREAT LAKES SPORT TRAINER 2T1-E

This famous design was formerly the fleet ship of the C-D fleet—the ship that changed almost every known aircraft industry. The kit originally sold for \$5.50, and being such an excellent flyer with so many requests that we bring back this beautiful number, we have done so; and to show the extra quality in the present day C-D designs, this number is now being sold for only 65c and is legitimately priced. Sug. col.: orange and black, has a 20" span. One flew 3608 ft. Dry Kit No. R-57, only **65c**



GRUMMAN F2F-1 FIGHTER

Latest Navy fighting ship, still on secret list. Big wing area makes model splendid flyer. Drawings cover both retracted or extended landing gear. Dry Kit R-33, only **65c**

BUILD THIS TRANSCONTINENTAL RECORD BREAKING HUGHES RACER! A POSSIBLE FUTURE U. S. PURSUIT!



Howard Hughes phenomenal landplane record breaking achievements have so impressed the U. S. Army, they have taken on this design for further study, for speeds over 350 miles an hour are not to be sneezed at. This design, have nearest approach yet to rocket speed, has been designed into a model of the finest color of silver and blue with this retractable landing gear. A WHIZ for speed! Dry Kit R-54, (without liquids) only **95c**

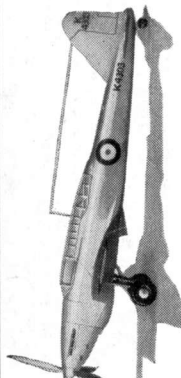


20" STINSON RELIANT CABIN PLANE

Beautiful taper wing "Rep" design "looks like a million bucks", when finished in the green and cream trimming we suggest. Very graceful model in flight—unusually stable. Kit R-66, complete (except no liquids) **65c** Postfree, only

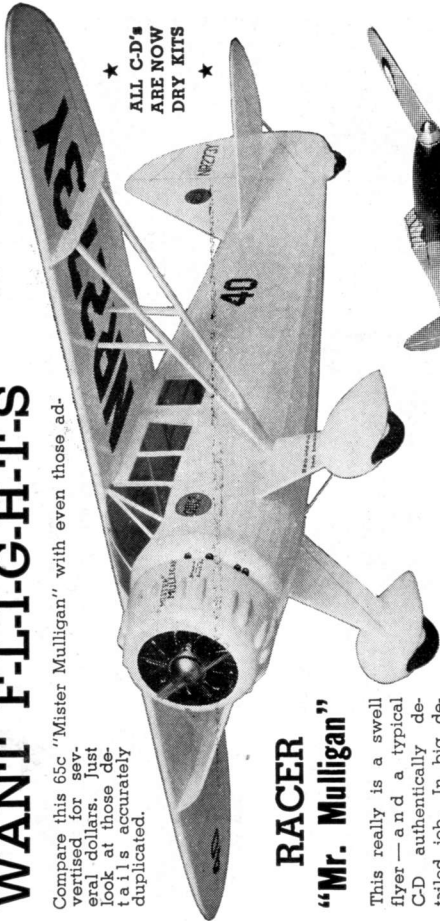
20" FAIRY "BATTLE"

Trim, sleek, swift—being a design that plane designers throughout the world are keenly watching. 1000 of these are being built for England's Fighting and Bombing Fleet. "Rep" model is careful reproduction of prototype—flies fast, long and with exceptional grace. All silver. Kit R-67, complete (except no liquids) postfree, only **65c**



WANT F-L-I-G-H-T-S

Compare this 65c "Mister Mulligan" with even those advertised for several dollars. Just look at those details accurately duplicated.



★ ALL C-D'S ARE NOW DRY KITS ★

RACER "Mr. Mulligan"

This really is a swell flyer—and a typical C-D authentically demanded—better hurry your order. Kit R-52, only **65c**

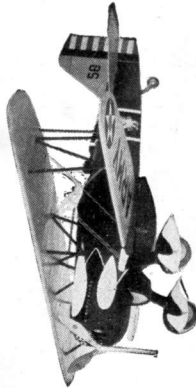


HAWKER LOW WING

Landing gear may be fully retracted as on the prototype, coloring suggested all silver; insignia supplied. A "peach" for flights. Kit R-59, only **65c**

They're All Raving About This RYAN SPORTSTER ST

This beautiful little two place job is well known to modelbuilders everywhere and our model looks as pretty as does the prototype. Span of course 20", suggested coloring, all silver, like the prototype. Model stable and fast. Kit R-58, only **65c**

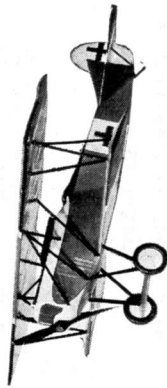


A Great Contest Winner CONSOLIDATED A-11 ATTACK

(Formerly P-30). A blue and yellow beauty—and a "wow" for flights. Loads of detail. Movable machine gun, scale prop, radio mast, etc., etc. Many flying contests have been won with this model. This is one of the very latest U. S. Army designs. Kit R-56, only **50c**

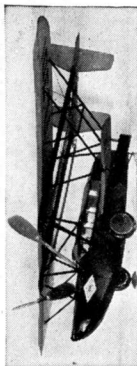
Don't Fail to Build This Keen CURTISS HAWK P6-E FIGHTER

Hard to tell this actual 20" model photo from our 3/4" model. Full of typical C-D authentic features and details. Speedy flights. Kit R-21, only **65c**



FOKKER D-7 FIGHTER

This actual 20" model photo is almost a twin in looks to the photo of our 3/4" model. Be sure to get it. Excellent flights. Kit R-15, only **65c**



THE CLEVELAND AMPHIBION AN AMPHIBION NEVER YET EQUALLED

The "perfect" kit for warm weather fun, especially for vacations. Will take off water as easily as water rolls from a duck's back and that's mighty fast. Long steady flights are always to be expected. Twin wheels Span 28". Will also R.O.G. as the models are quickly dropped. Without liquids. Kit R-X5001, only **65c**