



**AMERICA LOOKS TO BOEING'S
WICHITA DIVISION FOR
MASS TRAINER PRODUCTION**

Leading the industry in primary trainer production, Boeing's Wichita Division has delivered more than 2,000 Stearman Trainers under the emergency defense program. This record production pace was set during factory expansion which has tripled the floor space in the main plant. The continued confidence of the United States Army and Navy is expressed in recent large orders.

Quantity deliveries of trainers have also been made to the Philippines and to South American countries.

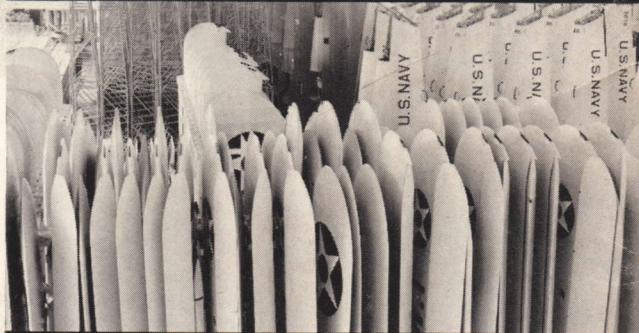
Safety, reliability and advanced engineering are factors that have won for Boeing's Stearman Trainers their prominence in the field of military flying instruction.

Boeing
AIRPLANE COMPANY

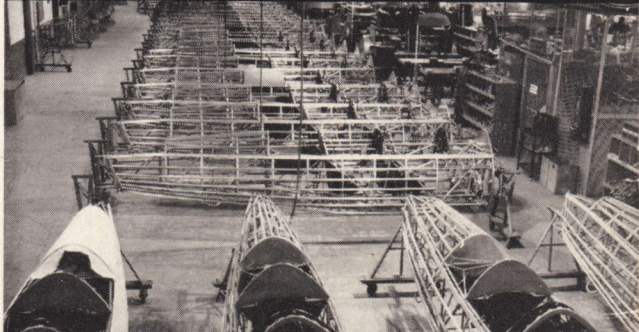
Seattle, Washington
Wichita, Kansas
Vancouver, B. C.



ALONG THE ENGINE LINE WHERE POWER PLANTS ARE PREPARED FOR INSTALLATION IN STEARMAN TRAINERS



WINGS AND FUSELAGES FOR ARMY AND NAVY TRAINERS, PRODUCED IN VOLUME AT BOEING'S WICHITA DIVISION



A PORTION OF THE BODY PRODUCTION LINE AT THE BOEING FACTORY IN WICHITA



A RECENT SHIPMENT OF STEARMAN TRAINERS LEAVING THE PLANT EN ROUTE TO THE PHILIPPINES