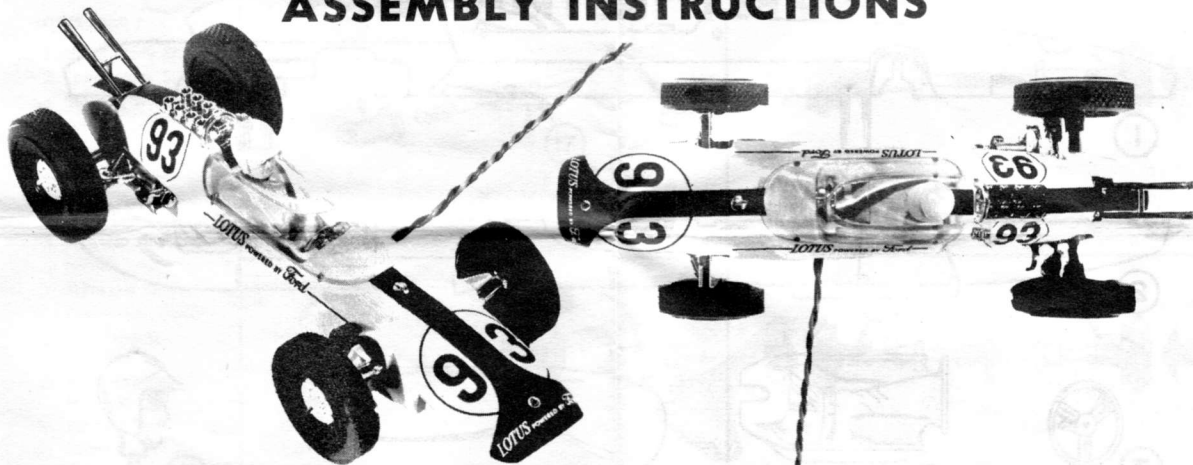


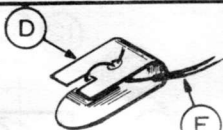
# 1/24 SCALE LOTUS-FORD and PYLON ASSEMBLY INSTRUCTIONS



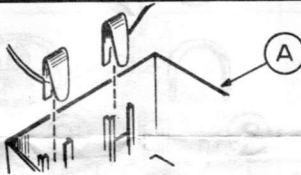
## PYLON ASSEMBLY:

### PYLON PARTS LIST

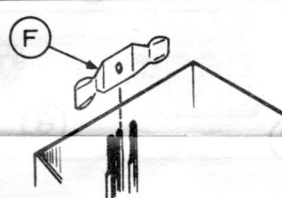
- A Pylon Housing
- B Pylon Housing Base
- C Rotating Cap
- D Small Battery End Connectors
- E Terminal Wires
- F Large Battery End Connector
- G Steel Washer
- H Contact Wiper
- I Steel Pin
- J Contact Screw



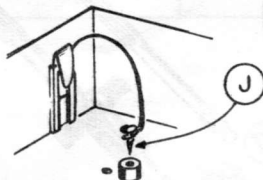
1. Wrap one bare end of each Terminal Wire (E) around each of the Small Battery End Connectors (D), and bend each connector to form a "U" as shown.



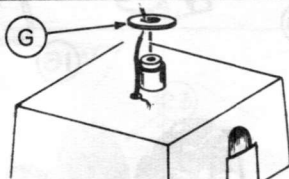
2. Insert the two small Battery End Connectors into the Pylon Housing (A).



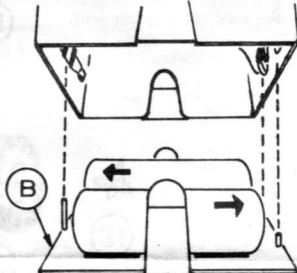
3. Insert the single Large Battery End Connector (F) into the Pylon Housing.



4. Take one of the Terminal Wires and wrap the free end around the Contact Screw (J). Insert the screw into the post securely.



5. Thread the other Terminal Wire through the hole in the Pylon Housing next to the post. Place bare end of the wire through the Steel Washer (G) and press Washer firmly onto the post.

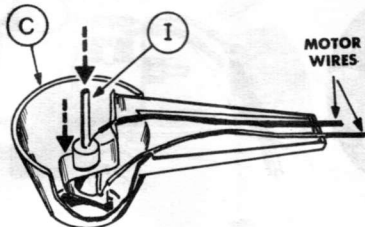


6. Set two "D" size batteries (not included) in opposite directions on the Pylon Housing Base (B). The Base has two short pins on one side and one long pin on the opposite side. When placed on the Pylon Housing, the two short pins are to support the two Small Battery End Connectors. The long pin is to support the Large Battery End Connector. Be sure the Small Battery Connectors make contact with the batteries.



MOTOR WIRE

7. The motor of your Lotus-Ford has two wires that transfer power from the Pylon to the car. Stretch the wires out and neatly twist as in photographs of finished model. Take one of the wires and slip the bare end into the slot in the Contact Wiper (H).



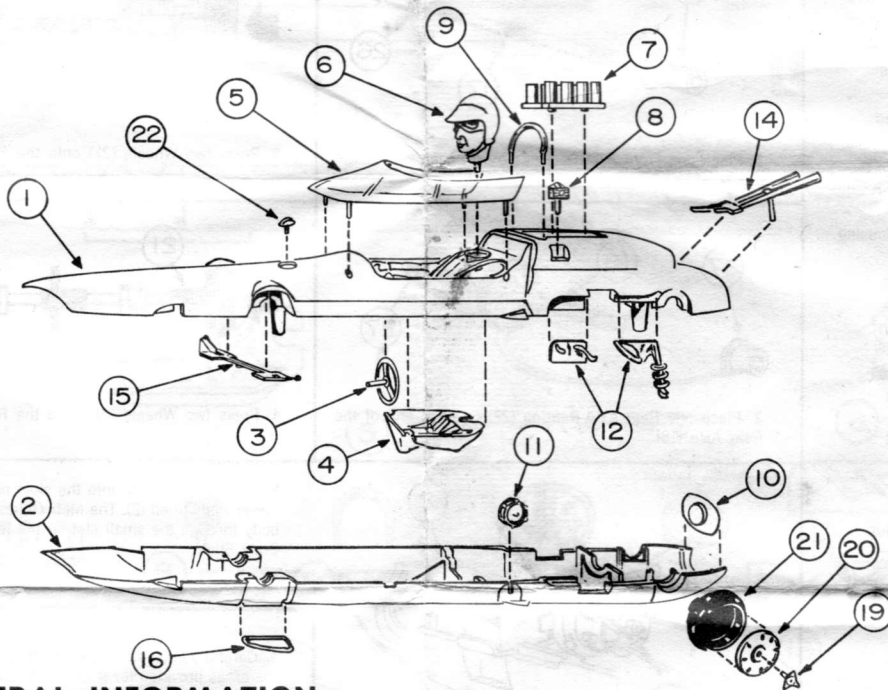
MOTOR WIRES

8. Carefully slide the Wiper onto the post inside the Rotating Cap (C). Place the bare end of the other wire into the hole in the post and firmly press the Steel Pin (I) into the hole. Snap the two wires into the slots on the end of the Rotating Cap.

The assembly of the Pylon is complete.

Test your assembly by placing the Rotating Cap assembly on the Pylon Housing. The Steel Pin in the Rotating Cap fits into the post on the Pylon Housing. Depress the Cap until the Contact Wiper snaps over the Steel Washer. The motor should now operate. To stop the motor, remove the Rotating Cap.

# DELUXE ASSEMBLY:



## GENERAL INFORMATION:

For all cementing, work from the inside of the car wherever possible. Scrape away all the plating from the pins on the plated parts so these parts can be easily cemented into place. Use a cement intended for polystyrene plastics and take care to use the cement sparingly and to avoid smearing it on the outer plastic surfaces.

## ASSEMBLY:

**1.** Before securing the two body shells together with the Body Screws, cement the Steering Wheel (3), Driver's Legs (4), and Upper Front Suspension (15) to the Upper Body Shell (1). These parts are to be cemented in place from inside the Body Shell.

**2.** Cement the following parts to the outside of the Upper Body Shell in this order: Driver's Head (6), Windshield (5), Carburetor Intake Bells (7),

Magneto Heat Sink (8), Rollbar (9), Gas Cap (22), and Exhaust Pipes (14).

**3.** The Left and Right Exhaust Manifolds (12) and (13), must be cut as shown in the above diagram, to accommodate the Motor. After the manifolds are cut, they are to be cemented to the Upper Body Shell only.

**4.** Cement the following parts to the Lower Body Shell: Transaxle Housing (10), Fuel Valve (11), Left and Right Lower Front Suspension (16) and (16).

**5.** Place a small amount of cement along the outside edge of the Wheel Insert (20) and set it inside the Wheel. Put a dab of cement on the pin of the Knock-off Hub (19) and insert into the hole in the center of the Wheel Insert. Repeat this process with each Wheel.